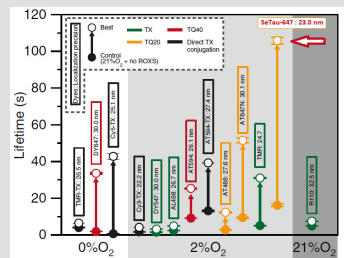
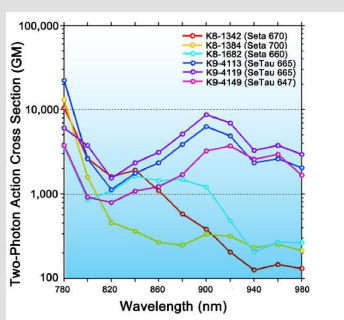




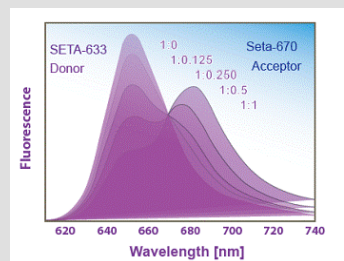
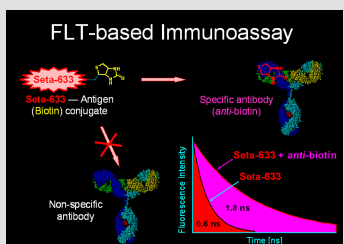
# SETA BioMedicals

Fluorescent Tools for BioMedical Applications



SETA BioMedicals produces and markets proprietary **fluorescence detection reagents** for biomedical and pharmaceutical research, clinical diagnostics and high-throughput screening.

- **Labeling Technologies**  
Next generation labels for proteins, oligonucleotides and other biomolecules with exceptional brightness and photostability
- **Highly Water-Soluble Rotaxane Labels**  
Novel, extremely bright and stable probes and labels based on squaraine rotaxanes: extinction coefficients of 200,000 [M<sup>-1</sup>. cm<sup>-1</sup>] and Q.Y.s of up to 65% in aqueous media
- **Click Chemistry Reagents**  
Azides and proprietary DBCO derivatives for Cu-free, strain-mediated click chemistry reactions in aqueous media
- **2-Photon Microscopy Labels**  
Reactive fluorescent dyes based on cyanines, squaraines and squaraine rotaxanes with exceptional 2-photon absorption cross-sections from 500 to 10,000 [GM]
- **Fluorescence Lifetime Labels**  
Lifetime labels with lifetimes from 0.5 to 32 ns for fluorescence lifetime and polarization-based applications
- **FRET Labels**  
FRET pairs with a wide range of Förster distances from 40 to 80 Å
- **Phycobiliprotein Tandem-Conjugates**  
Superior FRET-tandems of Seta dyes with phycobiliproteins (PE, APC, PerCP): Seta-PE-670, Seta-PE-775, Seta-APC-710, Seta-APC-780, Seta-PerCP-680



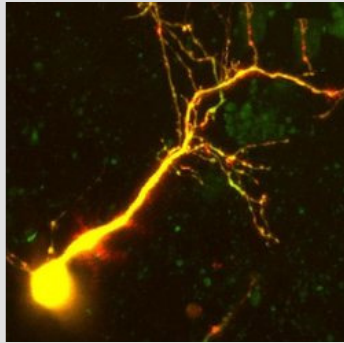
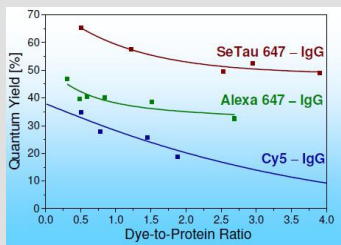
## Main Characteristics:

**Wide spectral range:** Seta, Square and SeTau dyes absorb and emit in the 350–850 nm spectral range. Unlike other commercially available dyes of the **Cy** and **Alexa** series, some of the red and NIR emitting markers can be excited not only with the red, 635-nm and 670-nm diode lasers but also with the blue, 370-nm or 405-nm lasers or light emitting diodes (LEDs).

**Extremely bright:** The red and NIR Seta, Square and SeTau dyes have high extinction coefficients (up to 270,000 M<sup>-1</sup>cm<sup>-1</sup>), and quantum yields up to 60% (bioconjugates up to 70%) in aqueous buffer solutions.

**High stability:** Compared to Cy or Alexa dyes, Seta, Square and especially SeTau dyes exhibit much higher photostability and stability against oxidizers such as ozone and/or hydrogen peroxide compared to other dyes.

**Long fluorescence lifetimes:** Selected SeTau dyes have fluorescent lifetimes in the order of 10 – 30 ns in water.



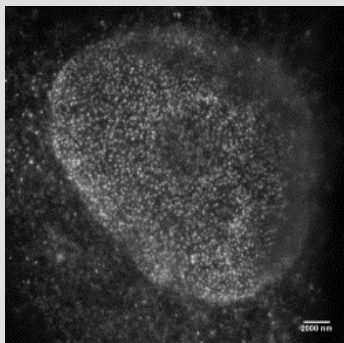
**Low blinking:** The long-wavelength **Seta**, **Square** and **SeTau** dyes show low blinking effects and therefore are promising in single molecule applications.

**High sensitivity towards the microenvironment:** **Seta** and **Square** probes exhibit high affinity for proteins, biomembranes and lipoproteins and therefore can be used for their detection and quantification.

**pH-sensitivity in physiological and alkaline pH range:** Selected **Seta** and **Square** probes and labels display sensitivity in the physiological and alkaline pH range (see e.g. Square-650-pH-NHS).

**SETA FRET-** Besides a large number of **FRET pairs** with a wide range of excitation and emission wavelengths and Förster distances **SETA BioMedicals** also offers a **free software** for the calculation of overlap integrals and Förster distances.

Please contact us at 217 417 2160 or visit our website at [www.setabiomedicals.com](http://www.setabiomedicals.com) for more information.

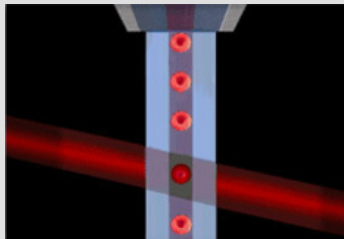


#### Applications:

**SETA BioMedicals fluorescent detection reagents** are used in fluorescence applications with intensity, polarization or fluorescence lifetime (FLT) as the read-out parameter.

More specific areas include:

- DNA/Protein Microarrays
- **Biological Imaging**
- Flow Cytometry
- Immunology
- Drug Discovery
- Cellular and Molecular Biology
- Proteomics
- Genomics
- High-throughput Screening
- Single Molecule Applications
- Photodynamic Therapy
- Clinical Diagnostics
- Super-resolution Microscopy



#### Contact Details:

# SETA BioMedicals

Fluorescent Tools for BioMedical Applications

2014 Silver Ct East  
Urbana IL 61801  
Tel.: 217 417 2160  
FAX: 217 689 4237

[www.setabiomedicals.com](http://www.setabiomedicals.com)  
[support@setabiomedicals.com](mailto:support@setabiomedicals.com)